

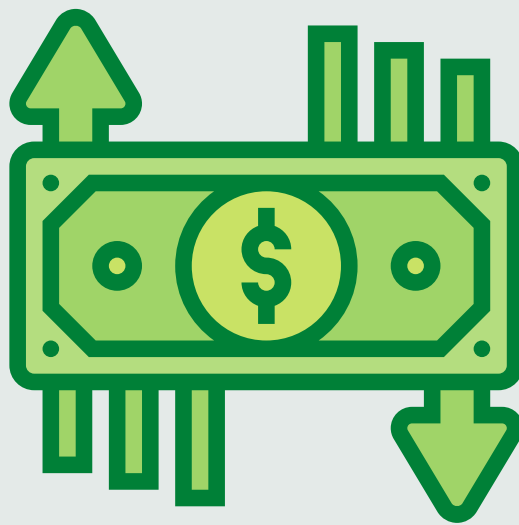
# Bloom Where You're Planted or Strive for Advancement?

When it comes to your career which is the better approach? Bloom where you are planted and see what comes of it, or take every chance you can to advance your skills and move up the ladder as fast as you can?



**39%**

of people who change careers list salary increase as the main factor.



**21**

Percentage of employees who feel they are paid what they are worth.



**70%** of the workforce is actively seeking a change in career.



**65%**

of workers report feeling isolated in the workplace.

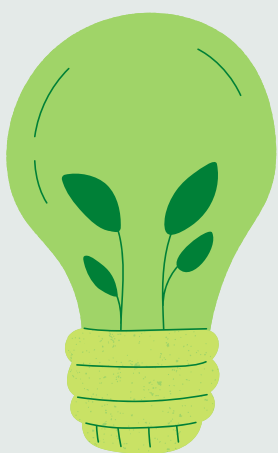


**Only 13%**

of today's population are largely satisfied with their work experiences.

## Most People

change careers 5 to 7 times in their working careers.



## IT'S TIME TO TAKE ACTION

Our assessments empower you to make hiring, promotion, and employee development decisions that are backed by data and aligned to meet your business goals.

### TRY IT YOURSELF

Behavioral Assessments  
[OmniaGroup.com/try-a-complimentary-assessment](http://OmniaGroup.com/try-a-complimentary-assessment)

#### Resources:

<https://goremotely.net/blog/career-change-statistics/>  
<https://blog.edx.org/edx-survey-finds-1-3-americans-ages-25-44-completely-changed-fields-since-starting-first-job-post-college>  
<http://www.mentalhealthamerica.net/sites/default/files/Mind%20the%20Workplace%20-%20MHA%20Workplace%20Health%20Survey%202017%20FINAL.PDF>  
[http://www.huffingtonpost.com/2013/07/01/workers-change-careers\\_n\\_3530346.html](http://www.huffingtonpost.com/2013/07/01/workers-change-careers_n_3530346.html)

